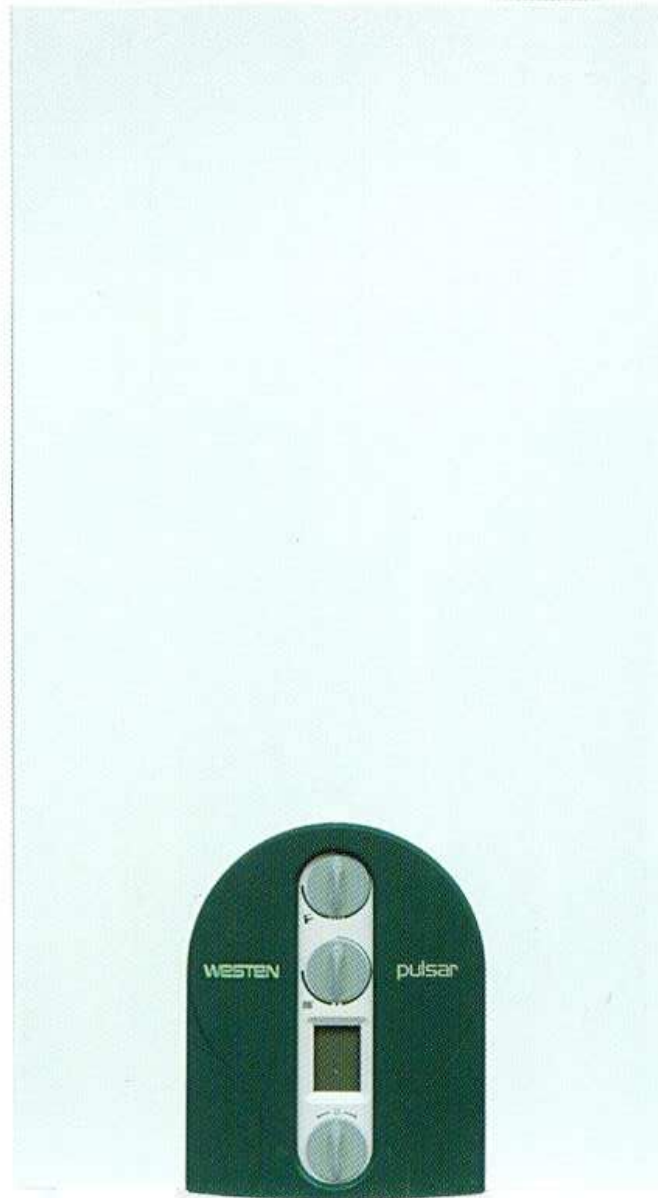


WESTEN

The smart choice for your home comfort



SPARE PARTS CATALOGUE

- January 2015 -

HOW TO READ THE SPARE PARTS CATALOGUE

In the spare part catalogue, after the exploded diagrams, there are the components lists of the boilers; this is the meaning of the different columns:

Pos.	Identification number of the component in the exploded diagram of the boiler.
Description	Short description of the component.
Code	BAXI S.p.A. code of the component.
Tab. XX	XX is the exploded diagram number of the boiler taken into consideration.
From serial number	Date (year and week) identifying the beginning of production of a component (taken from the serial number of the boiler). e.g. B005: year 2000 (B identifies the decade 2000-2009; 0 identifies the year) – 5th week. If the box is empty, the component is in use from the beginning of production of the boiler.
To serial number	Date (year and week) identifying the end of production of a component (taken from the serial number of the boiler). e.g. B012: year 2000 (B identifies the decade 2000-2009; 0 identifies the year) – 12th week. If the box is empty, the component is still in use.
Interchangeable	It identifies the interchangeability between the new component and the old one. YES: components are interchangeable. NO: components are not interchangeable.

TABELLA COLLEGAMENTO CODICE CALDAIA - ESPLOSO
TABLEAU CONNECTION CODEX CHAUDIERE - VUE ECLATEE
BOILERS CONNECTION BOARD - EXPLODED VIEW

BOILER CODE	BOILER DESCRIPTION	EXPLODED REF.
CODICE CALDAIA	DESCRIZIONE CALDAIA	RIF. ESPLOSO
CODIGO CALDERA	DESCRIPCION CALDERA	REF. EXPLOSIONADO
CODE CHAUDIÈRE	DESCRIPTION CHAUDIÈRE	RÉF. EXPLOSÉE
CYH445143982	PULSAR 1.140 Fi	Tab 194
CYH445143981	PULSAR 1.140 Fi	Tab 194
CYH445143980	PULSAR 1.140 Fi	Tab 194
CYH441143981	PULSAR 1.140 i	Tab 195
CYH441143980	PULSAR 1.140i	Tab 195
CYH445243982	PULSAR 1.240 Fi	Tab 196
CYH445243981	PULSAR 1.240 Fi	Tab 196
CYH445243980	PULSAR 1.240 Fi	Tab 196
CYH441243981	PULSAR 1.240 i	Tab 197
CYH441243980	PULSAR 1.240i	Tab 197
CYH446243983	PULSAR 240 Fi	Tab 201
CYH446243982	PULSAR 240 Fi	Tab 201
CYH446243981	PULSAR 240 Fi	Tab 201
CYH446243980	PULSAR 240 Fi	Tab 201
CYH446243984	PULSAR 240 Fi -WESTEN-	Tab 347
CYH442243980	PULSAR 240i	Tab 198
CYH442243982	PULSAR 240i	Tab 198
CYH442243981	PULSAR 240i	Tab 198
CYH442243983	PULSAR 240i -WESTEN-	Tab 345

PULSAR

15/02/2017

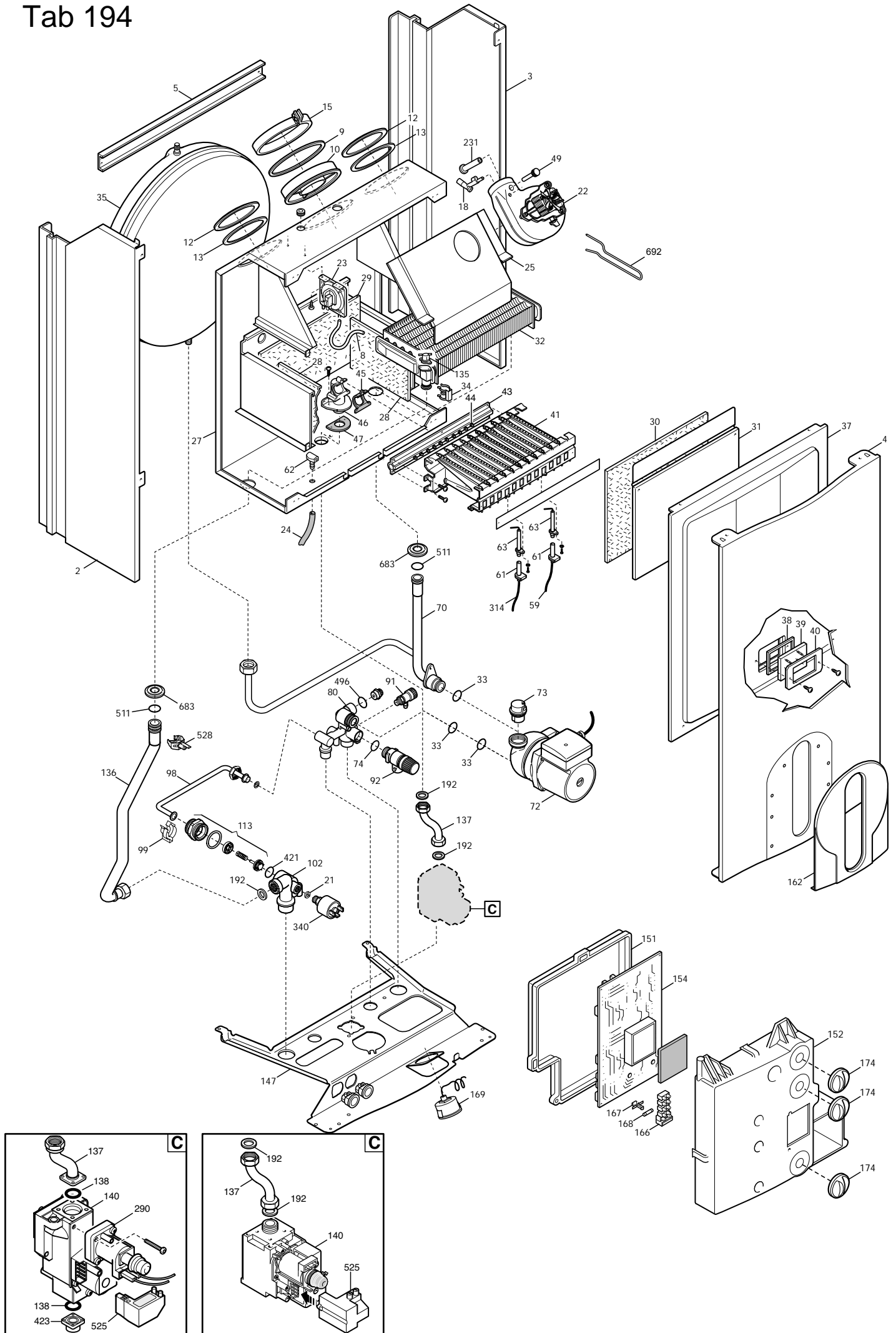
Pos	Code	Description code	CYH441143980 1.140 i	CYH441143981 1.140 i	CYH441243980 1.240 i	CYH441243981 1.240 i	CYH442243980 240 i	CYH442243981 240 i	CYH442243982 240 i	CYH442243983 240 i	CYH445143980 1.140 Ft	CYH445143981 1.140 Ft	CYH445143982 1.140 Ft	CYH445243980 1.240 Ft	CYH445243982 1.240 Ft	CYH446243980 240 Ft	CYH446243981 240 Ft	CYH446243982 240 Ft	CYH446243983 240 Ft	To serial number	From serial number	Intercha ngeable:		
2	5663680	LEFT PANEL ASSEMBLY									•		•	•			•				B524		NO	
2	5668310	LEFT PANEL ASSEMBLY	•	•	•	•	•	•	•												B524		NO	
2	5677560	LEFT PANEL ASS. CUBE								•														
2	5677560	LEFT PANEL ASS. CUBE	•	•	•	•	•	•	•													B525		
2	5677580	LEFT PANEL ASS. CUBE FF										•			•	•			•	•				
2	5677580	LEFT PANEL ASS. CUBE FF									•		•	•				•	•			B525		
3	5663670	RIGHT PANEL ASSEMBLY									•		•	•				•	•		B524		NO	
3	5668300	RIGHT PANEL ASSEMBLY	•	•	•	•	•	•	•												B524		NO	
3	5677550	RIGHT PANEL ASS. CUBE								•														
3	5677550	RIGHT PANEL ASS. CUBE	•	•	•	•	•	•	•													B525		
3	5677570	RIGHT PANEL ASS. CUBE FF										•		•	•			•	•					
3	5677570	RIGHT PANEL ASS. CUBE FF									•		•	•				•	•			B525		
4	5115470	FRONTAL PANEL ECO3	•	•	•	•	•	•	•		•		•	•			•	•	•		B524		NO	
4	5115620	FRONTAL PANEL ECO3								•		•		•	•			•	•					
4	5115620	FRONTAL PANEL ECO3	•	•	•	•	•	•	•		•		•	•				•	•			B525		
5	5113790	FRONTAL TRAVERSE	•	•	•	•	•	•	•	•	•	•	•	•	•	•	•	•	•	•				
8	5408080	PRESSURE SWITCH PIPE L=270									•	•	•	•	•	•	•	•	•					
9	5108700	FLUE RESTRICTOR D.80											•					•	•					
9	5115170	FLUE RESTRICTOR D.80									•	•		•				•	•					
9	5116550	FLUE RESTRICTOR D.82												•	•									
10	5409450	FLUE GASKET									•	•	•	•	•	•	•	•	•	•				
12	5108690	PLATE BLANKING									•	•	•	•	•	•	•	•	•	•				
13	5407400	SUCTION CAP GASKET									•	•	•	•	•	•	•	•	•	•				
15	5664050	JOINT ASSEMBLY D.100 L=20									•	•	•	•	•	•	•	•	•	•				
18	5409580	PRESSURE SENSING VENTURI 80E									•	•	•	•	•	•	•	•	•	•				
18	5413850	PRESS.SENS.VENTURI SINGLE TAP												•	•									
21	5402050	WASHER-SEALING	•	•	•	•	•	•	•	•	•	•	•	•	•	•	•	•	•	•				

Pos	Code	Description code	CYH441143980 1.140 i	CYH441143981 1.140 i	CYH441243980 1.240 i	CYH441243981 1.240 i	CYH44243980 240 i	CYH44243981 240 i	CYH44243982 240 i	CYH44243983 240 i	CYH445143980 1.140 Ff	CYH445143981 1.140 Ff	CYH445143982 1.140 Ff	CYH445243980 1.240 Ff	CYH445243981 1.240 Ff	CYH445243982 1.240 Ff	CYH446243980 240 Ff	CYH446243981 240 Ff	CYH446243982 240 Ff	CYH446243983 240 Ff	CYH446243984 240 Ff	To serial number	From serial number	Interch angeable:					
22	5663810	FAN 1 SPEED																											
22	5682150	FAN																											
23	628610	PRESS.SWITCH ASS. 0,68mbar HONEYW.																							C121	YES			
23	628630	PRESS.SWITCH ASS. 0.4mbar HONEYW.																							C121	YES			
23	5640000	PRESSURE SWITCH ASS. IND.																						C120					
23	5663820	PRESSURE SWITCH 80 ASS. IND.																						C120					
23	710789900	PRESSURE SWITCH ASSEMBLY HUBA																						1448					
23	711277100	FLUE PRESS. SWITCH 50-39Pa HUBA																											
23	721890300	FLUE PRESS.SWITCH 70-60Pa HUBA																								1449	YES		
24	5407930	PIPE - VALVE COMPENSATION																							B923				
24	5414320	PIPE-VALVE COMPENS.4,5x8 L=170																								B924	YES		
25	5113800	CONVEYOR ASSEMBLY																											
27	5676830	COMBUSTION CHAMBER ASSEMBLY																											
27	5677210	COMBUSTION CHAMBER ASSEMBLY																											
27	5677940	COMBUSTION CHAMBER ASS. 14KW																											
27	5678490	COMBUSTION CHAMBER 14 KW FF																											
27	5685460	COMB.CHAMBER ASS. ECO3 14KW FF																											
28	5213210	INSULATING PANEL																											
28	5213220	INSULATING PANEL																											
29	5213280	INSULATING PANEL																									B506	YES	
30	5213370	INSULATING PANEL																											
30	5213380	FRONTAL INSULATING PANEL																											
31	5113820	COMB. CHAMBER FRONT PANEL																											
31	5114290	COMB. CHAMBER FRONTAL PANEL																											
32	5677660	PRIMARY EXCHANGER WITH CLIPS																											
32	5692530	HEATING EXCHANGER ASS.24KW GIA																											
33	5403130	O-RING 22 x 3																									1311		
33	710963000	OR 21,5X3 EP70 TFL																									1312	YES	

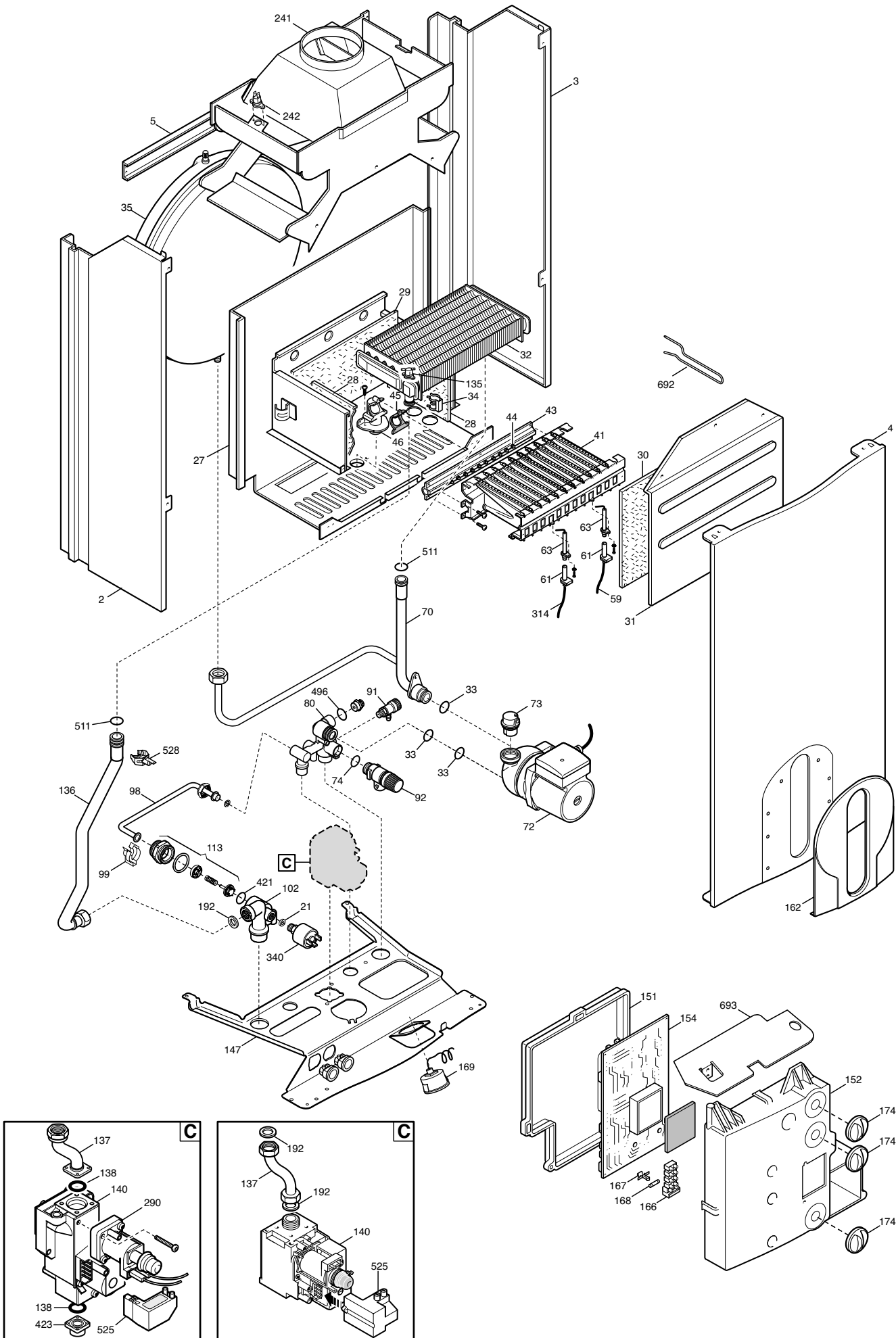
Pos	Code	Description code	CYH441143980 1.140 l	CYH441143981 1.140 l	CYH441243980 1.240 l	CYH441243981 1.240 l	CYH442243980 240 l	CYH442243981 240 l	CYH442243983 240 l	CYH445143980 1.140 Ft	CYH445143981 1.140 Ft	CYH445143982 1.140 Ft	CYH445143982 1.240 Ft	CYH445243980 1.240 Ft	CYH445243982 1.240 Ft	CYH446243981 240 Ft	CYH446243982 240 Ft	CYH446243983 240 Ft	CYH446243984 240 Ft	To serial number	From serial number	Intercha ngeable:
72	5661200	PUMP UP 15-50/CONNECTOR	•	•	•	•	•	•	•	•	•	•	•	•	•	•	•	•	•			
73	607290	AUTOMATIC AIR VENT	•	•	•	•	•	•	•	•	•	•	•	•	•	•	•	•	•			
74	5406360	O-RING 14X1,78 EP	•	•	•	•	•	•	•	•	•	•	•	•	•	•	•	•	•			
76	5653650	DHW PLATE EXCHANGER					•	•	•							•		•		B649		
76	5686660	DHW PLATE EXCHANGER 10 PLATES								•							•					
76	5686660	DHW PLATE EXCHANGER 10 PLATES					•	•	•							•		•			B650	YES
77	5404520	DHW PLATE EXCHANGER GASKET					•	•	•	•						•	•	•	•			
80	5655650	HYDRAULIC INLET ASSY	•	•	•	•				•	•			•	•							
80	5676890	HYDRAULIC INLET GROUP					•	•	•							•	•	•	•			
80	5696180	ES-RR ASS. C/FILLING 15.0737								•									•			
81	619050	FILTER RESTRICTOR GROUP								•	•					•	•	•	•			
87	631680	PUMP CONNECTING ELEMENT/OR					•	•	•	•						•	•	•	•		1302	YES
87	5210710	PUMP CONNECTING ELEMENT					•	•	•	•						•	•	•	•		1301	
90	611930	FILLING GROUP					•	•	•	•						•	•	•	•			
91	5652030	DRAINING TAP	•	•	•	•	•	•	•	•	•			•	•	•	•	•	•			
92	9951170	SAFETY VALVE 3 BAR	•	•	•	•	•	•	•	•	•			•	•	•	•	•	•			
98	5212890	BY PASS PIPE ASSY					•	•	•							•	•	•				
98	5676330	BY-PASS PIPE ASSY-SYSTEM	•	•	•	•				•	•			•	•							
99	8380850	FIXING CLIP	•	•	•	•	•	•	•	•	•			•	•	•	•	•	•			
102	5676490	3-WAY VALVE ASSY	•	•	•	•				•	•			•	•							
102	5676910	3 WAY VALVE ASSEMBLY					•	•	•							•	•	•	•			
102	5693870	3 WAY VALVE ASS.W.OUT BY-PASS								•									•			
113	617100	BY-PASS GR.	•	•	•	•	•	•	•	•	•			•	•	•	•	•	•			
114	5403820	O-RING 26,64 X 2,62					•	•	•							•	•	•	•			
118	8380520	SPRING					•	•	•							•	•	•	•			
119	605760	HYDRAULIC VENTURI ASSEMBLY					•	•	•							•	•	•	•			
120	600750	SPACER ASSEMBLY					•	•	•	•						•	•	•	•			
122	5405370	O-RING					•	•	•	•						•	•	•	•			

Pos	Code	Description code	CYH441143980 1.140 i	CYH441143981 1.140 i	CYH441243980 1.240 i	CYH441243981 1.240 i	CYH44243980 240 i	CYH44243981 240 i	CYH442243983 240 i	CYH445143980 1.140 Fi	CYH445143981 1.140 Fi	CYH445143982 1.140 Fi	CYH445243980 1.240 Fi	CYH445243981 1.240 Fi	CYH445243982 1.240 Fi	CYH446243980 240 Fi	CYH446243981 240 Fi	CYH446243982 240 Fi	CYH446243983 240 Fi	CYH446243984 240 Fi	To serial number	From serial number	Intercha ngeable:
174	5409750	CONTROL PANEL KNOB-WESTEN	•	•	•	•	•	•	•	•	•	•	•	•	•	•	•	•	•	•			
192	5404650	SEALING WASHER G 3/4	•	•	•	•	•	•	•	•	•	•	•	•	•	•	•	•	•	•			
231	5409480	FLUE INTAKE								•	•	•	•	•	•	•	•	•	•				
241	5668420	CONVEYOR ASSEMBLY			•	•	•	•	•														
241	5678060	FLUE CHAMBER ASSEMBLY 14KW	•	•																			
242	606930	FLUE SAFETY THERMOSTAT 60C	•	•																			
242	616160	FLUE SAFETY THERMOSTAT 70ø			•	•	•	•	•														
280	5207730	GASKET 14,2X18X1,5					•	•	•	•						•	•	•	•	•			
290	5665230	MODULATION COIL ASSY	•	•	•	•	•	•	•	•	•	•	•	•	•								
314	8418870	LEAD - SENSING ELECTRODE	•	•	•	•	•	•	•	•	•	•	•	•	•	•	•	•	•	•	•		
336	8380680	CLIP-RETAINING					•	•	•	•	•	•	•	•	•	•	•	•	•	•			
337	5647340	MOTOR-3 WAY VALVE					•	•	•							•	•	•	•	•		B952	
337	5694580	3 WAY VALVE MOTOR					•	•	•							•	•	•	•	•			B953
337	5694580	3 WAY VALVE MOTOR								•										•			YES
340	5663750	PRESSURE SWITCH	•	•	•	•	•	•	•	•	•	•	•	•	•	•	•	•	•	•		B714	
340	9951690	PRESSURE SWITCH	•	•	•	•	•	•	•	•	•	•	•	•	•	•	•	•	•	•			B715
340	9951690	PRESSURE SWITCH								•	•								•	•			
421	5408270	O-RING 11,91 X 2,62 NBR	•	•	•	•	•	•	•	•	•	•	•	•	•	•	•	•	•	•			
423	5210410	GAS VALVE CONNECTOR	•	•	•	•	•	•	•	•	•	•	•	•	•	•	•	•	•	•			
493	612130	FILLING KNOB ASSEMBLY					•	•	•	•	•	•	•	•	•	•	•	•	•	•			
496	400020	O-RING	•	•	•	•	•	•	•	•	•	•	•	•	•	•	•	•	•	•			
498	400030	O-RING					•	•	•							•	•	•	•	•			
510	600760	DHW PADDLE ASSEMBLY					•	•	•							•	•	•	•	•			
511	5404600	O.R. 17,86x2,62	•	•	•	•	•	•	•	•	•	•	•	•	•	•	•	•	•	•			
525	8511560	SAC IGNITOR L 600 FOR SIT VALVE	•	•	•	•	•	•	•	•	•	•	•	•	•	•	•	•	•	•			1450
525	8511790	ANSTOSS CONNECTOR L=400mm	•	•	•	•	•	•	•	•	•	•	•	•	•	•	•	•	•	•			
525	8511800	SAC CONNECTOR L=400mm	•	•	•	•	•	•	•	•	•	•	•	•	•	•	•	•	•	•		1449	
528	8435360	NTC SENSOR (ITS)	•	•	•	•	•	•	•	•	•	•	•	•	•	•	•	•	•	•			

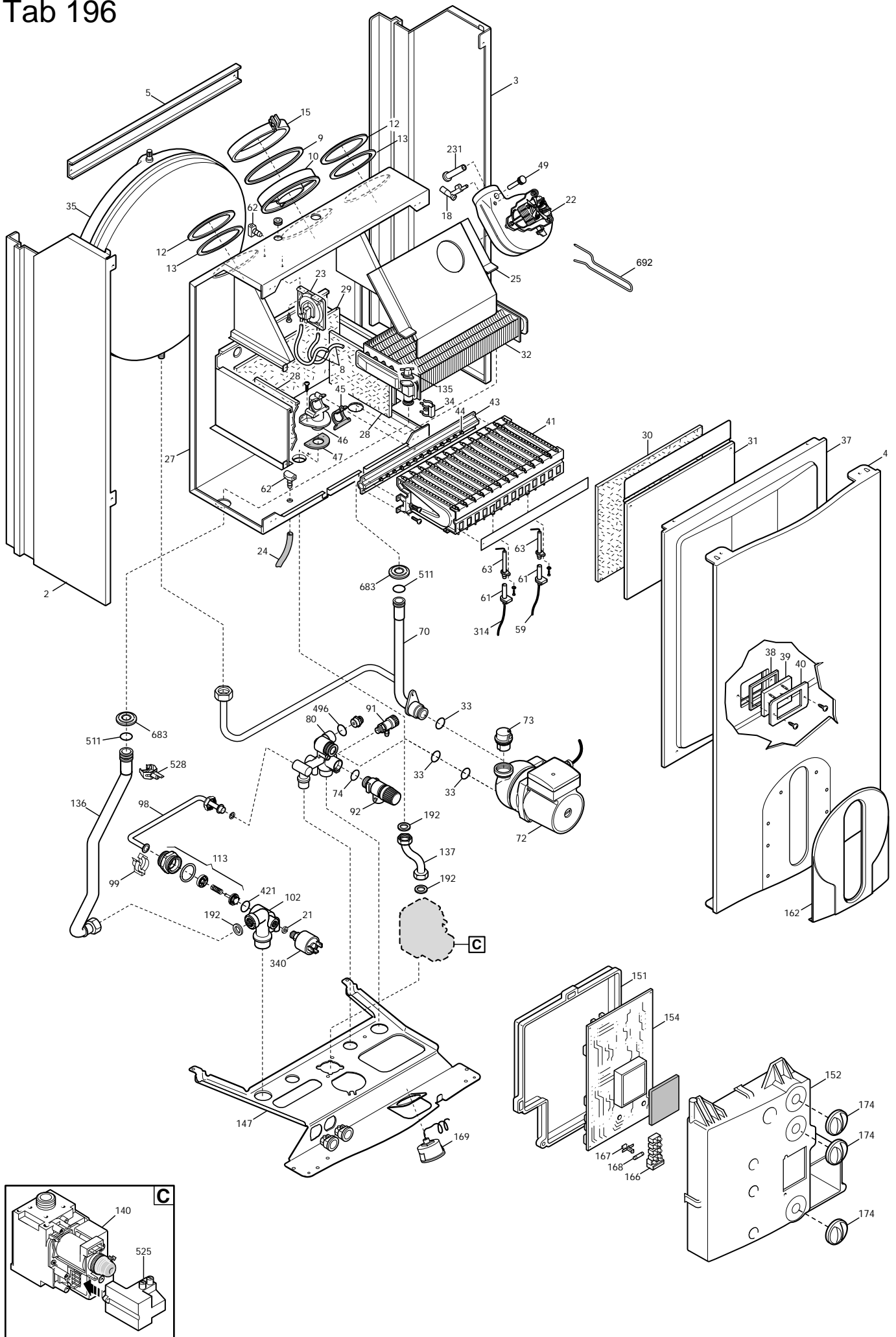
Tab 194

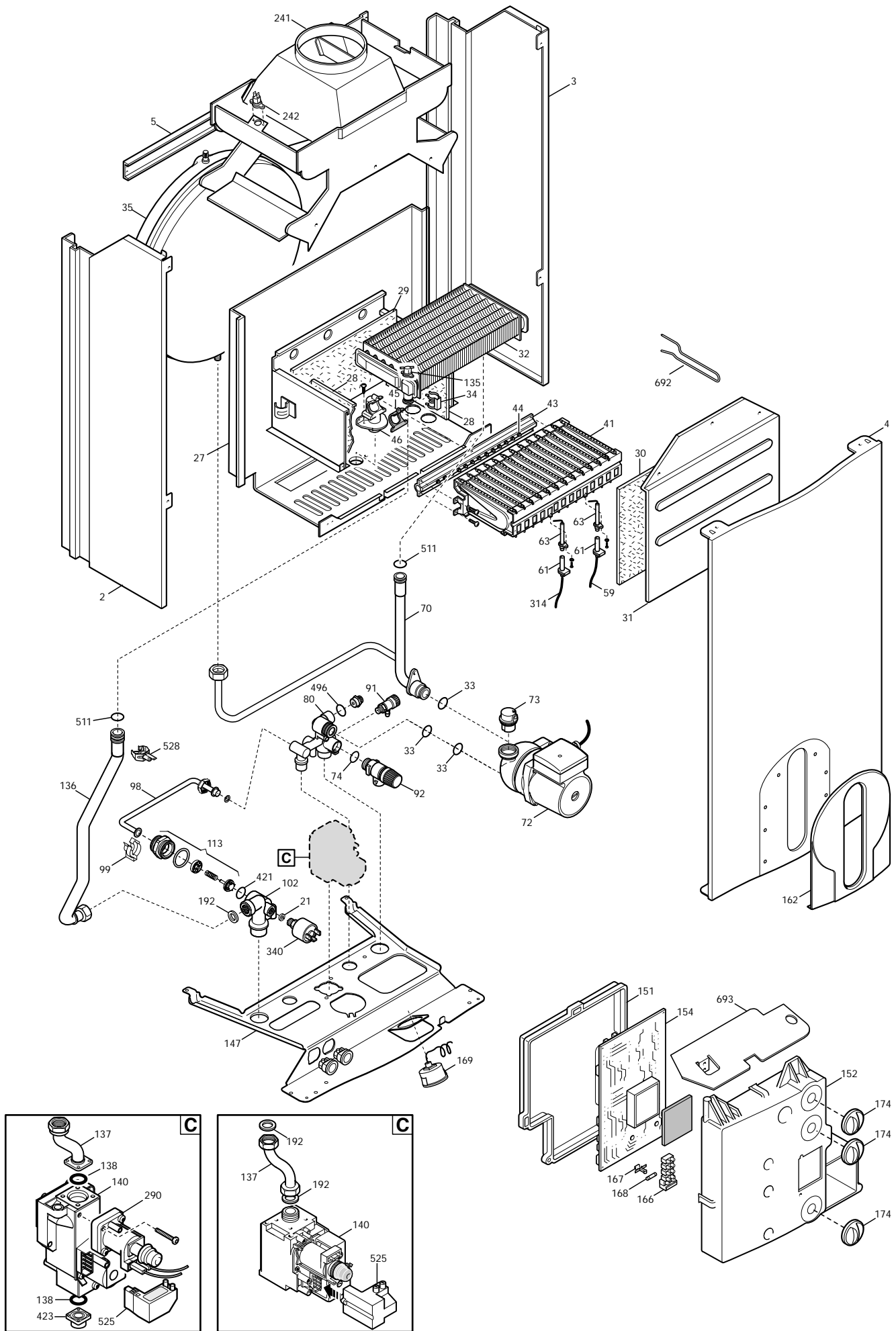


Tab 195

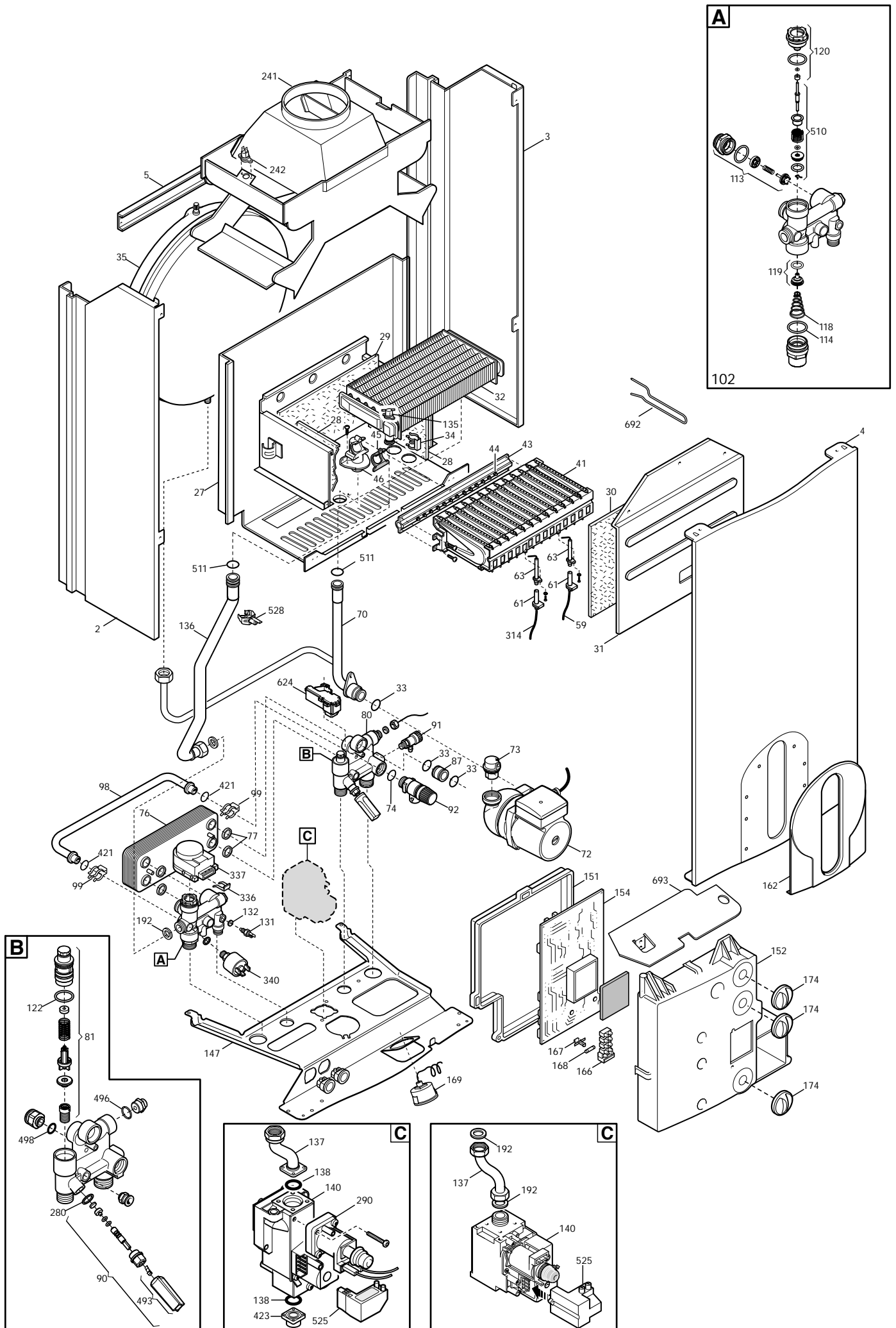


Tab 196

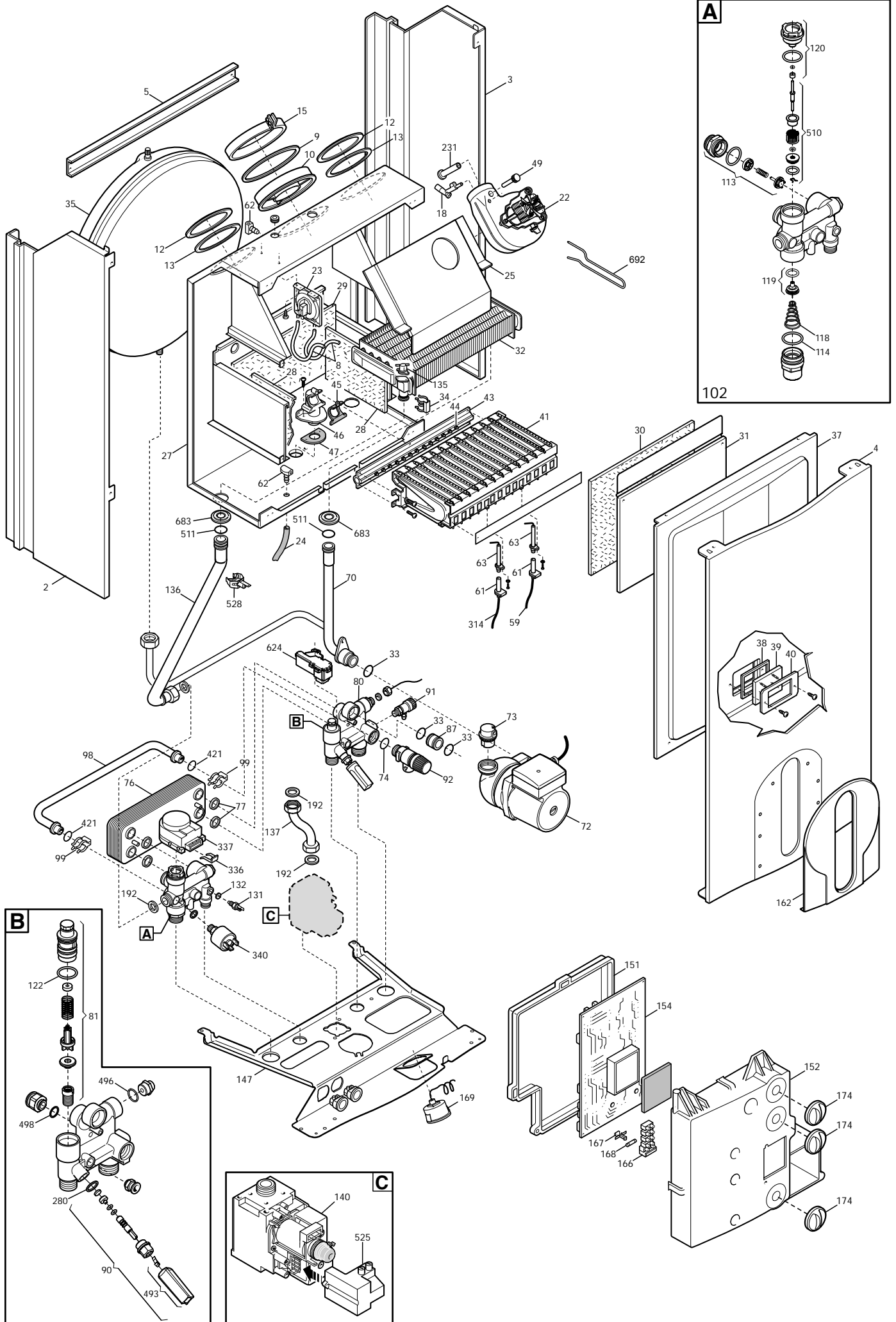




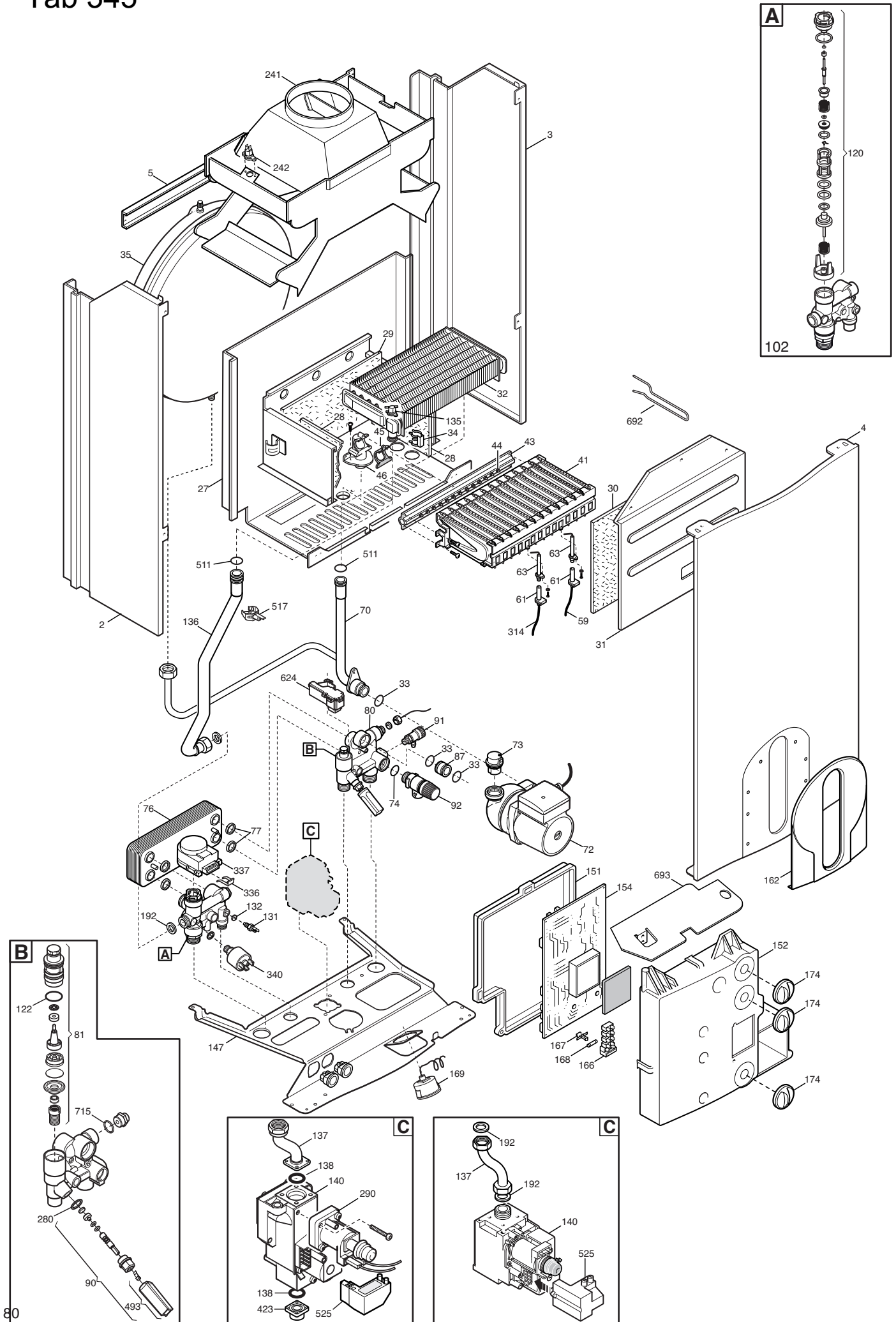
Tab 198



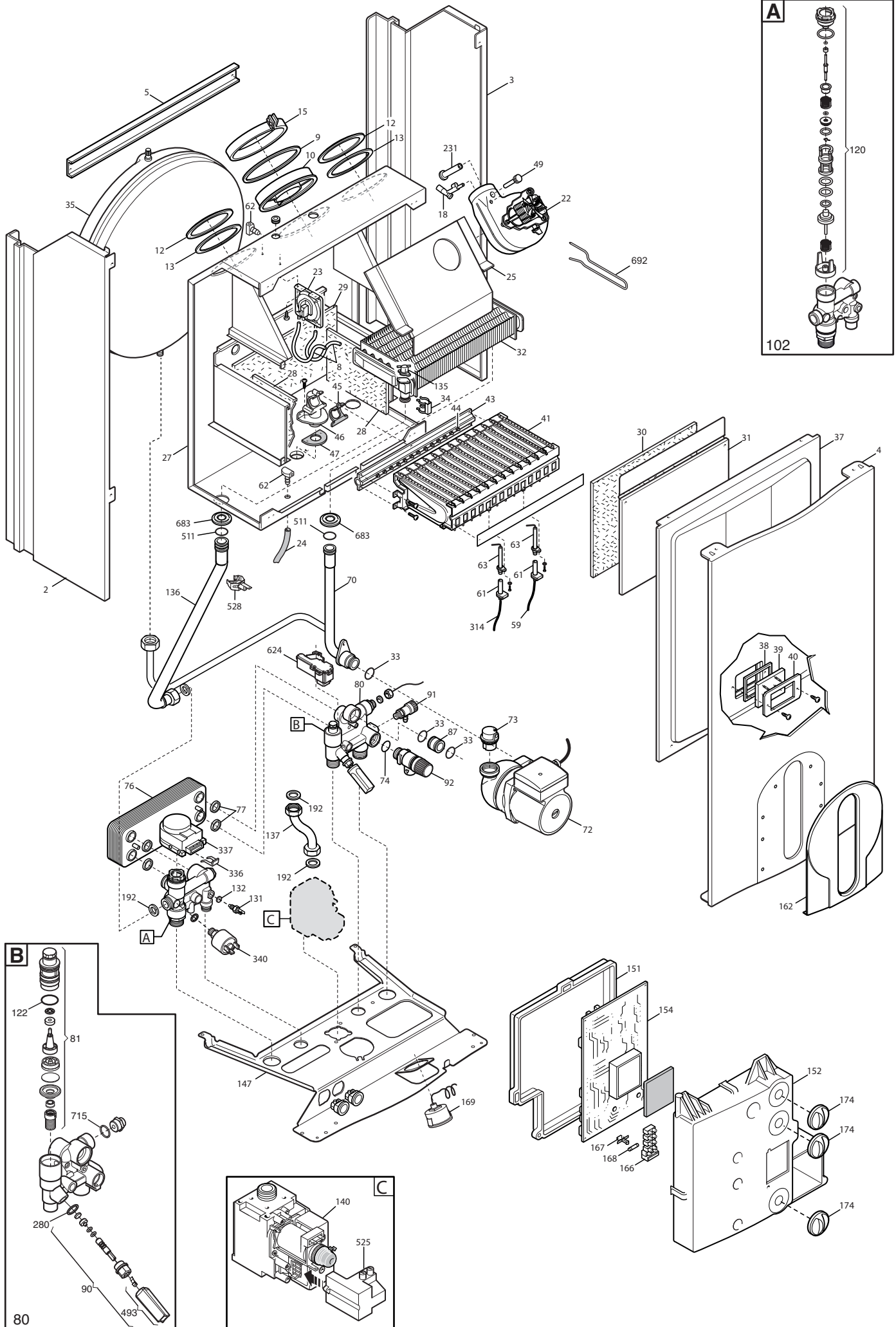
Tab 201



Tab 345



Tab 347



WESTEN

BAXI S.p.A.
Via Trozzetti, 20
36061 BASSANO DEL GRAPPA (VI) ITALY
Tel. +390424517111 Telefax +390424517379
Web site: www.baxi.it e-mail: service@baxi.it